



Dip Ophth(SA)

THE COLLEGES OF MEDICINE OF SOUTH AFRICA

Incorporated Association not for gain
Reg No 1955/000003/08

Examination for the Diploma in Ophthalmology of the College of Ophthalmologists of South Africa

7 February 2019

Paper 1

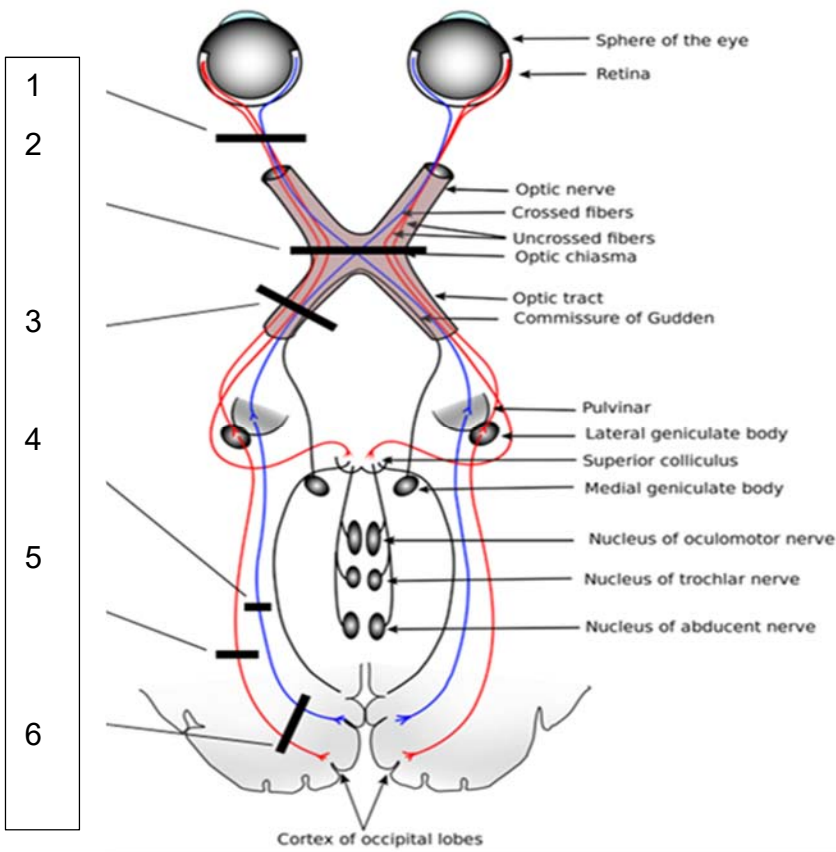
(3 hours)

All questions are to be answered. Each question to be answered in a separate book (or books if more than one is required for the one answer)

- 1
- a) What clinical signs are suggestive of orbital pathology and likely necessitate imaging of the orbit? (5)
 - b) Name the seven bones that make up the bony orbit and describe which location is most prone to damage in an orbital blow-out fracture. (5)
 - c) STUMPED is an acronym that is often used to describe the possible causes of infantile corneal opacification. What is on your differential diagnosis when an infant presents with corneal opacification? (5)
 - d) Discuss the causes of congenital cataracts. (10)
- [25]
- 2
- a) Discuss how you would differentiate between papilloedema and demyelinating optic neuritis in terms of:
 - i) Presenting symptoms. (3)
 - ii) Clinical signs. (6)
 - iii) Visual field abnormalities. (1)
 - b) Describe the laser settings and technique of performing a first session of Argon laser panretinal photocoagulation (PRP) on a patient with high-risk proliferative diabetic retinopathy (PDR). (5)
 - c) A patient sustains blunt trauma to the right eye. Which clinical features would make you suspect a globe rupture? (5)
 - d) Define:
 - i) Primary angle closure suspect. (2)
 - ii) Primary angle closure. (2)
 - iii) Primary angle closure glaucoma. (1)
- [25]

- 3 a) Draw and label the anatomical pathway of the pupillary light reflex. (6)
 b) Name the clinical signs of Horner Syndrome (Oculosympathetic palsy). (3)
 c) Write short notes on the clinical signs of Adie Pupil. (4)
 d) Write short notes on why we see the clinical findings of a complete 3rd nerve palsy. (4)
 e) What is the significance of pupil involvement or pupil sparing in 3rd nerve palsy? (2)
 f) Draw the expected field defects at the various lesion sites (using basic circles for each field). (6)

[25]



- 4 a) Write short notes on Age Related Macular Degeneration under the following headings: (4)
 i) Risk Factors (4)
 ii) Management: (4)
 • Dry/Atrophic. (3)
 • Wet/Neo-vascular. (4)
- b) Write short notes on Retinal vein occlusion under the following headings: (4)
 i) Risk factors. (4)
 ii) Diagnosis. (4)
 iii) Complications. (3)
 iv) Management. (3)

[25]