



## CANDIDATE INFORMATION LEAFLET

### COLLEGE OF EMERGENCY MEDICINE

Dear Candidate

#### Dip PEC (SA)

Thank you for and congratulations on making the decision to sit the **Dip PEC (SA)** examination. The following are a few important facts related to the examination.

#### THE FORMAT OF THE EXAM

The written component of the examination will consist of **Two MCQ papers in two separate sittings**. There are **no Short answer questions**. Both exams are online and are three hours each. **Negative marking will not apply to the MCQ**. Candidates are therefore encouraged to answer all items in the test. The pass mark for the MCQ Paper will be determined by a CMSA approved standard setting method.

#### PAPER 1

- *Online paper*
- *100 Single Best Answer MCQ*
- *The questions will be in the 'best of four' format. Only one answer is correct.*
- *Time allocation: 3 hours*

#### Sample Question for Paper 1

A 22-year-old man has a 4-day history of progressive weakness in his extremities. He has been healthy except for an upper respiratory tract infection 10 days ago. His temperature is 37.8C. BP is 130/80 mmHg, Pulse 94bpm, and respiration rate is 42 and shallow. He has symmetric weakness of both sides of his face as well as proximal and distal extremity muscles. Sensation is intact. No tendon reflexes can be elicited, and the plantar responses are flexor. Which of the following is the most likely diagnosis?

**A) Guillain-Barré Syndrome**

B) Myasthenia gravis

C) Poliomyelitis

D) Polymyositis

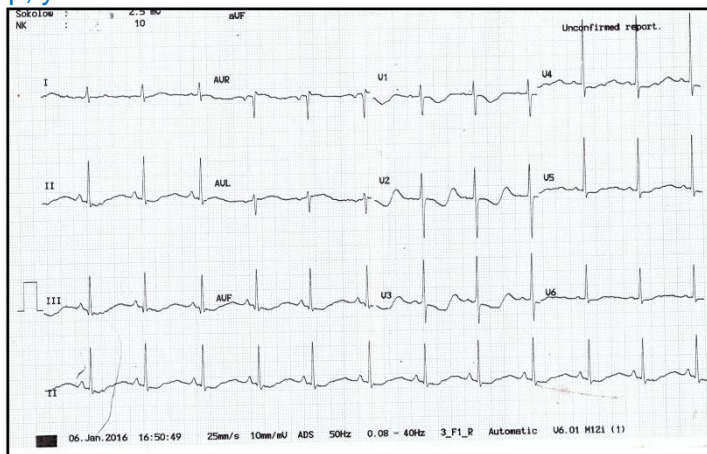
## PAPER 2

The aim of this section is to demonstrate candidates' ability in interpreting visual representations as related to emergency medicine. As such, the questions concentrate on items that are important in day-to-day emergency medicine practice. Stimulus (Image) based MCQ's test not only candidates' ability to interpret visual data but also their ways of dealing with patients with such problems.

The questions will include photograph recognition of emergency medicine-related clinical conditions covering all subspecialty areas, the interpretation of radiographs, CT scans, Ultrasound, Electrocardiograms, laboratory, blood gas and biochemical and statistical data.

- *Online paper*
- *100 Single Best Answer that is Stimulus (Image-Based) MCQ*
- *The questions will be in the 'best of four' format. Only one answer is correct.*
- *Time allocation 3 hours*
  
- *Sample Question for Paper 2*

A 42-year-old female presents with severe diarrhoea and generalised body weakness. As part of her workup, you record the ECG below. What is the best ECG diagnosis?



- A) Hypokalaemia
- B) Hyperkalaemia
- C) Posterior Stemi
- D) Anterior myocardial ischemia

The College of Emergency Medicine chooses exam questions based on the syllabus as outlined in the EM blueprint, which reflects the Emergency Medicine Competencies.

While questions can come from any area of the syllabus, some are routinely chosen due to their clinical importance and acuity. The content is balanced to ensure that the relevant domains are adequately represented. Typical areas of knowledge assessment and a percentage range are shown below.

Classification	% Marks*
1. CVS	10 to 15
2. Respiratory	10 to 15
3. Psychiatry	1 to 5
4. Neurology	5 to 10
5. Gastrointestinal	1 to 5
6. Genitourinary	1 to 5
7. Obstetrics/Gynaecology	1 to 5
8. Orthopaedic/Musculoskeletal	5 to 10
9. ENT	1 to 5
10. Ophthalmology	1 to 5
11. Haematology/Oncology	1 to 5
12. Endocrine / Metabolic	1 to 5
13. Dermatology	1 to 5
14. Infectious Disease	5 to 10
15. Paediatrics	5 to 10
16. Toxicology/Environmental	5 to 15
17. Geriatrics	5 to 10
18. Trauma	10 to 15
19. Critical Care	5 to 10
20. Prehospital / Aeromedical	1 to 5
21. Medicolegal and Ethics	1 to 5
22. Research and EBM	1 to 5
23. Basic science such as applied anatomy, physiology, pathophysiology, pharmacology	1 to 5
24. Clinical and practical skills used in the emergency environment	1 to 5
25. Teaching / management / leadership in the EC	1 to 5

\*The ranges are approximate and may vary slightly

#### **Acuity Frames: Target ( $\pm$ 5%)**

- Critical: 40%
- Emergent: 40%
- Lower Acuity: 20%

All papers will be completed by the candidates at a CMSA approved venue. CMSA will provide all candidates with a laptop, uninterrupted power supply and internet connection. There will be immediately available invigilators as well as IT specialists to address any technical issues.

The online exam will be completed using the Speedwell interface